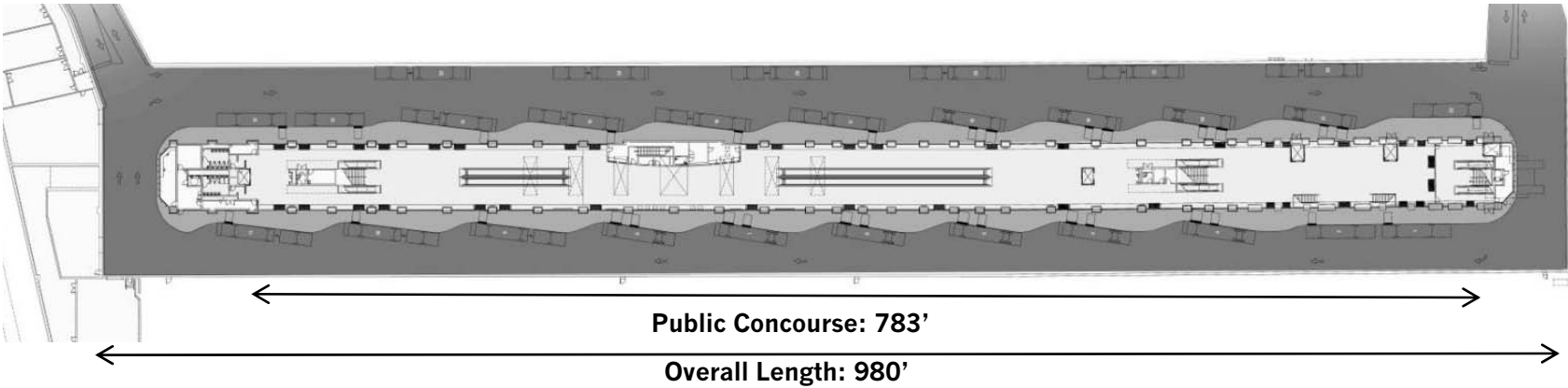
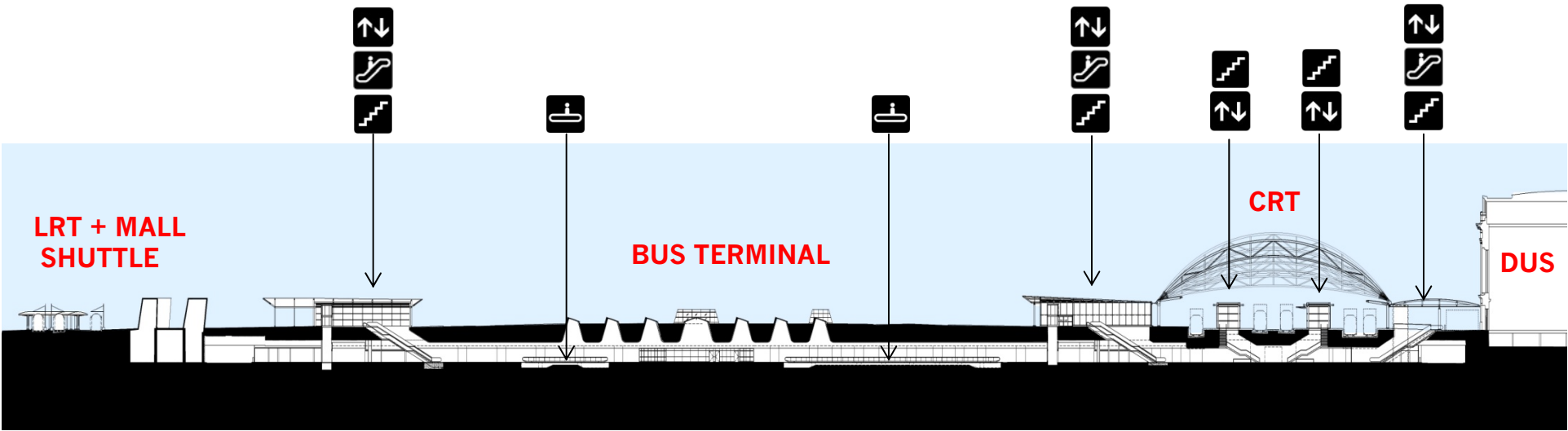


Regional Bus Terminal

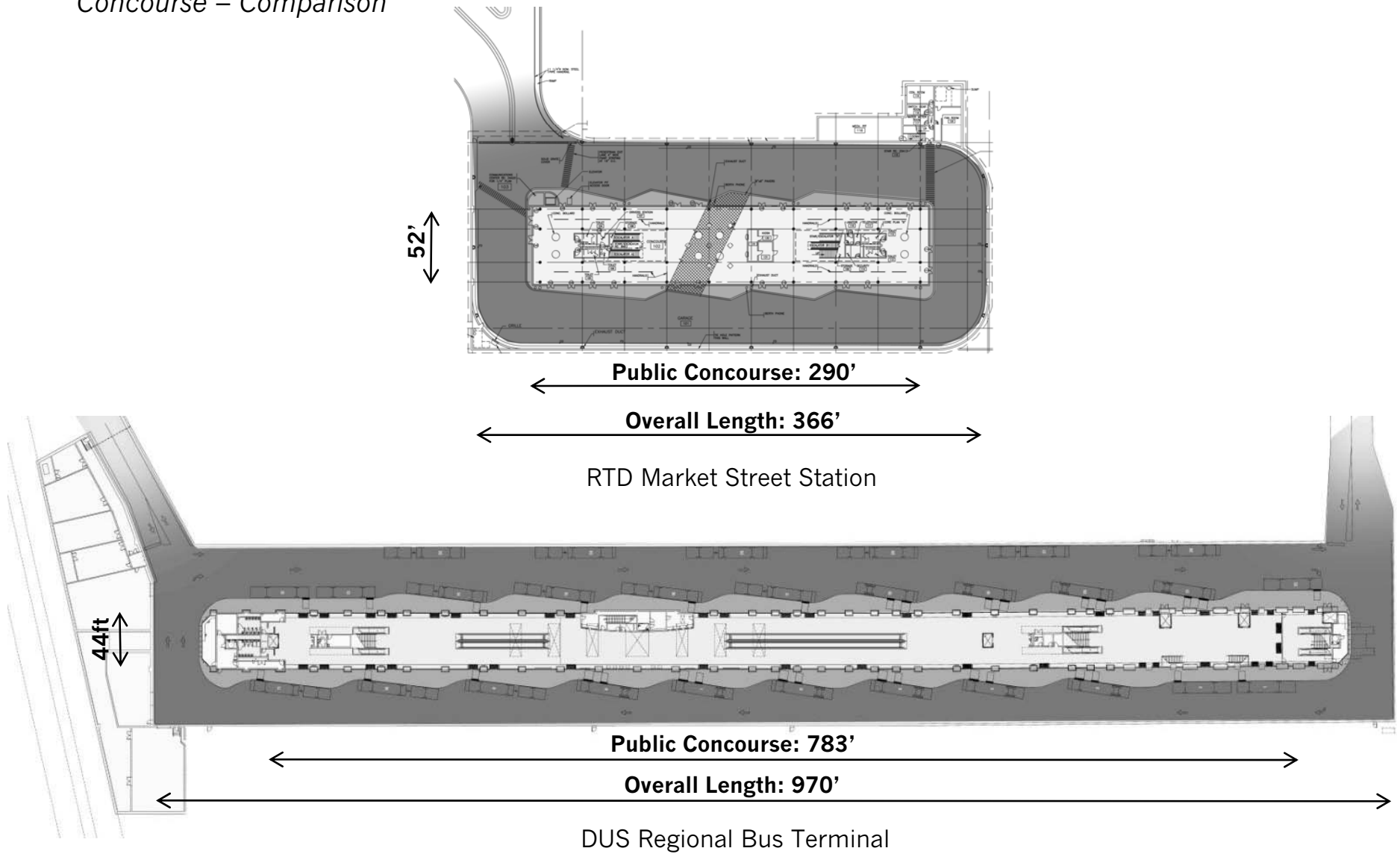
Vertical and Horizontal Circulation

- Stairs
- Escalator
- Elevator
- Moving Walkway

< 5% trips between LRT and CRT
 <10% total trips bound to Bus Terminal

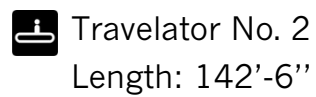
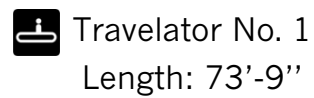


Regional Bus Terminal Concourse – Comparison



Moving Walkways

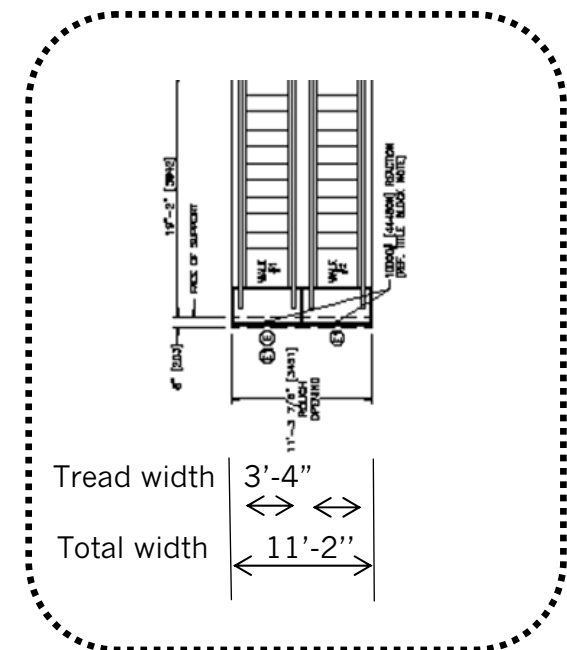
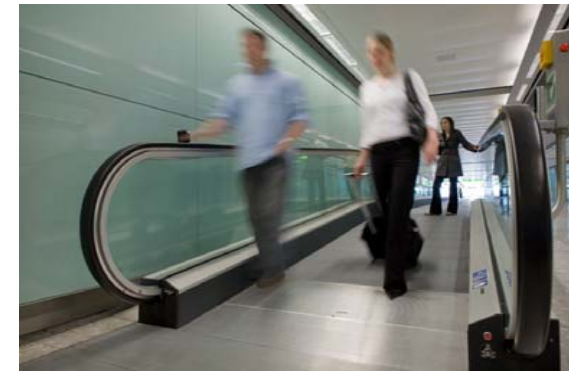
Moving Walkways

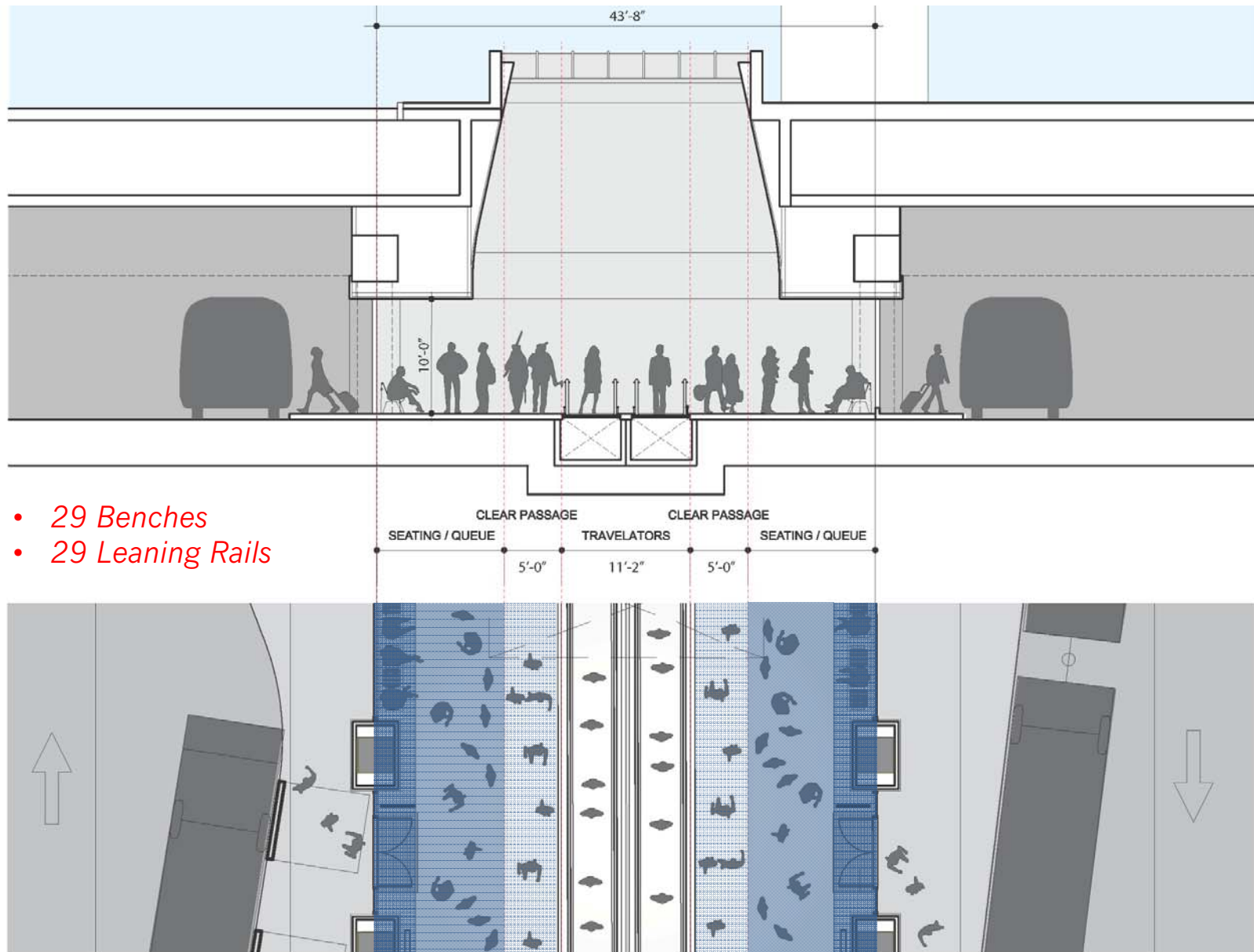


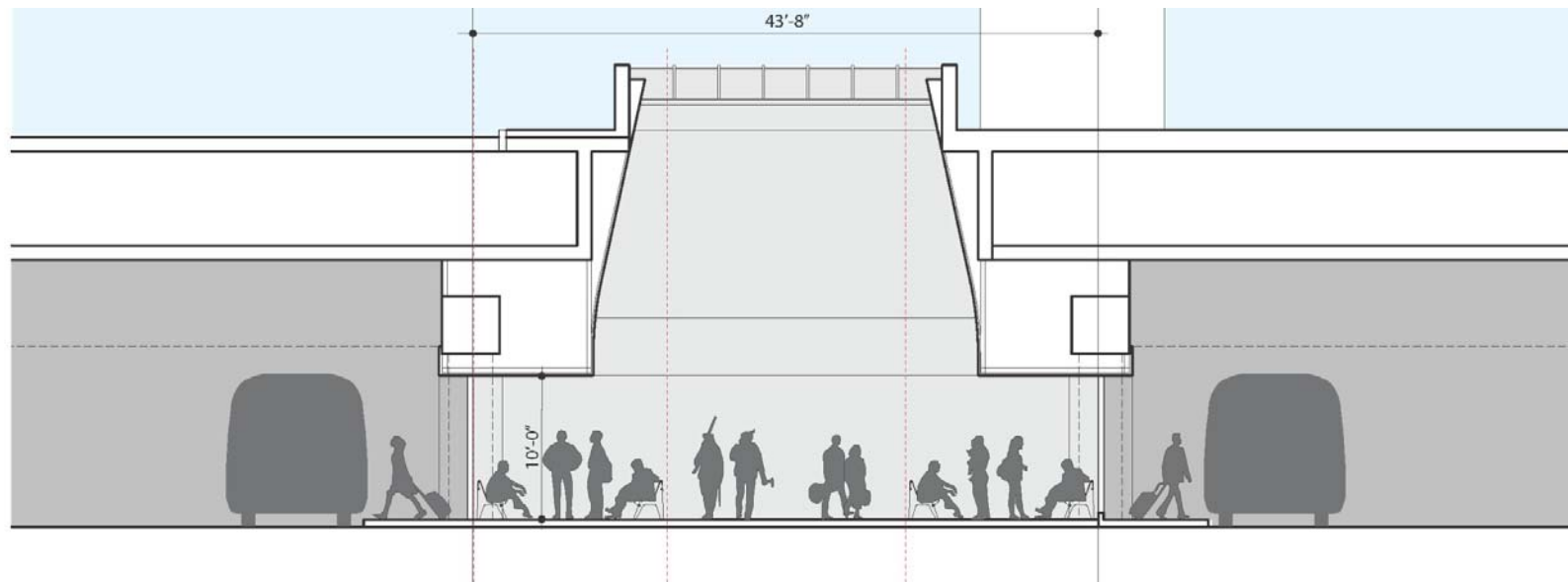
Public Concourse: 783'

Total Travelator Length: 216'-3"

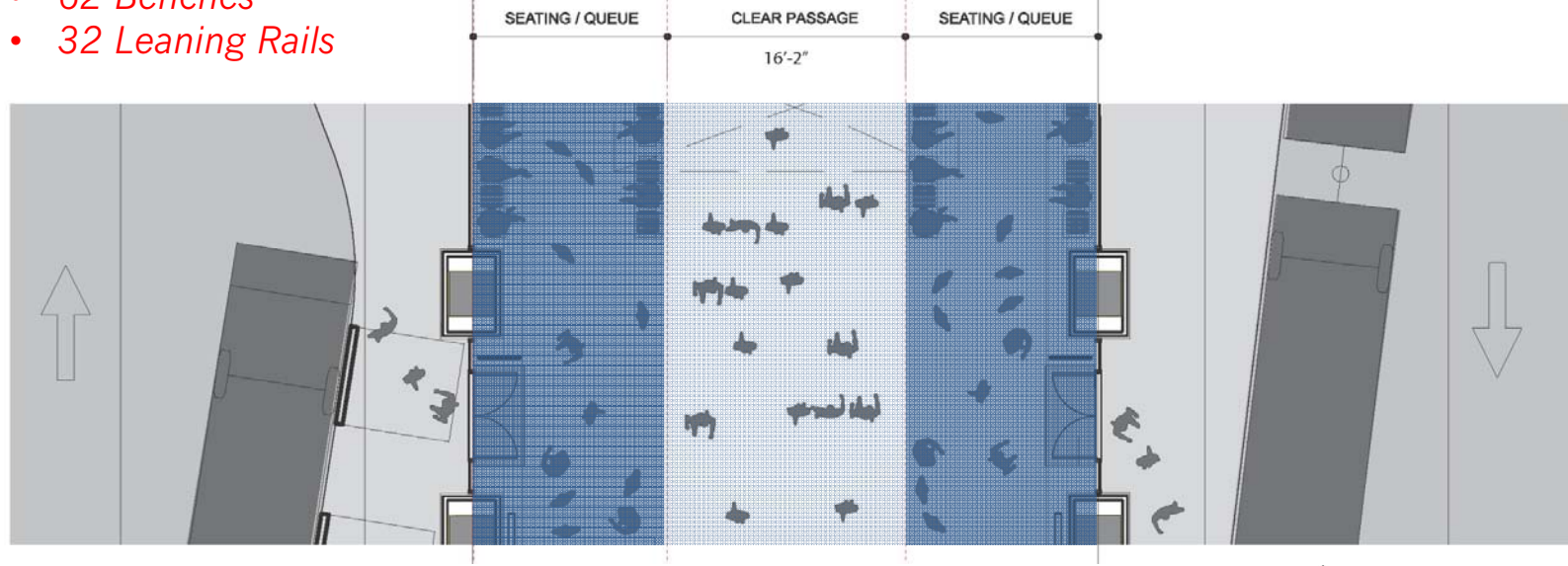
- 27% of concourse length
- 25% of concourse width
- 2,380 SF of floor area







- 62 Benches
- 32 Leaning Rails



Regional Bus Terminal

RTD Market St. / Civic Center Stations – Concourse and Bus Gates



Pedestrian Circulation



Typical Bus Gate

Regional Bus Terminal

RTD Market St. / Civic Center Stations – Concourse and Bus Gates



Gate Queue + Perch Seats



Customer Info + Amenities

Regional Bus Terminal

DUS Concourse and Bus Gates





