

17th Street Gardens



Denver **Union Station** Redevelopment

PRELIMINARY

AECOM **SOM** HARGREAVES
ASSOCIATES



17th Street Gardens



Denver Union Station Redevelopment

PRELIMINARY

AECOM SOM HARGREAVES
ASSOCIATES

17th Street Gardens



Denver **Union Station** Redevelopment

PRELIMINARY

AECOM **SOM** HARGREAVES
ASSOCIATES

17th Street Gardens



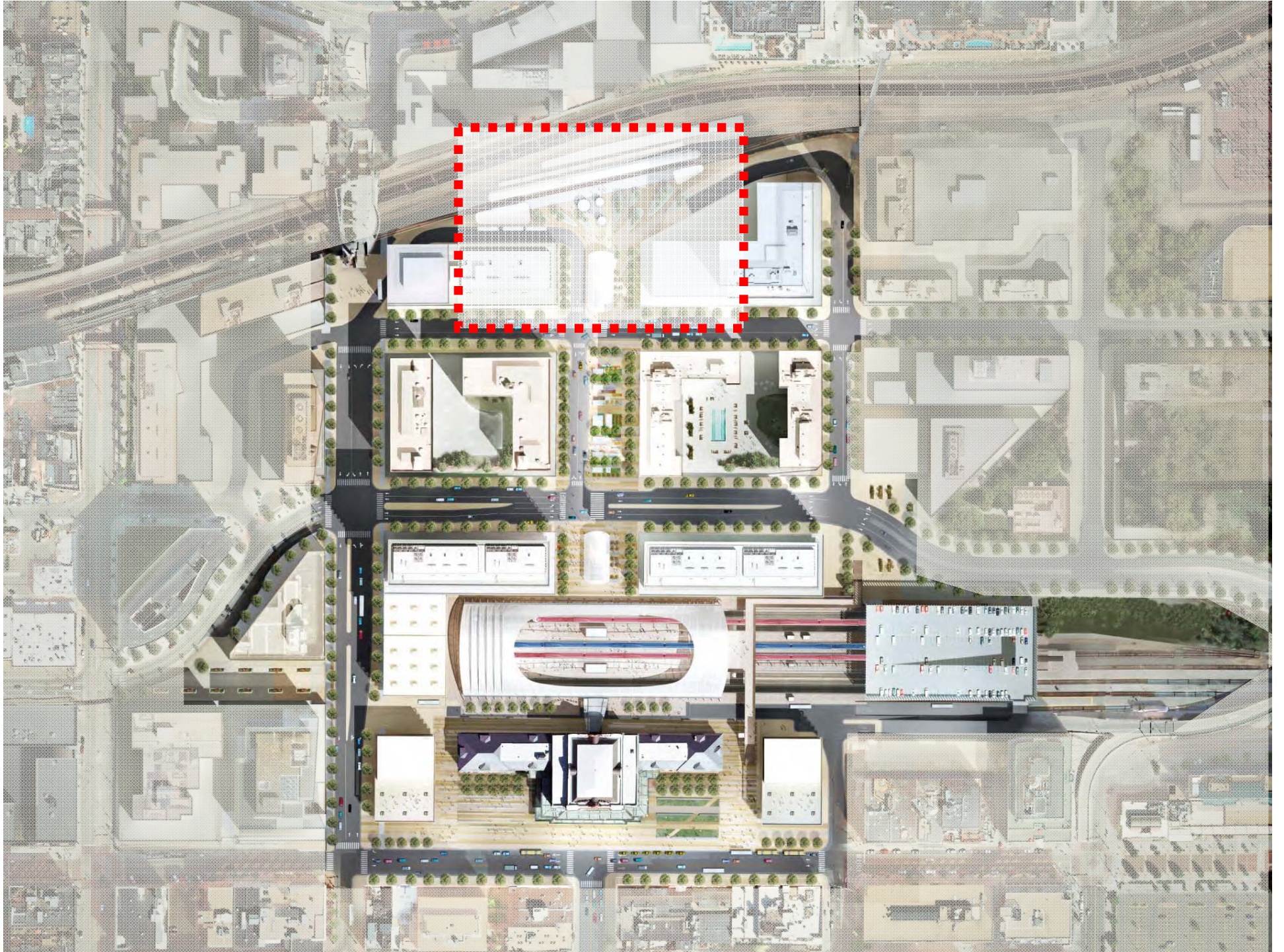
Denver Union Station Redevelopment

PRELIMINARY

AECOM **SOM** HARGREAVES
ASSOCIATES

17th Street Gardens





LRT Plaza



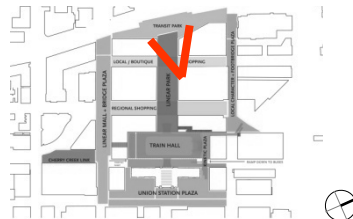
LRT Plaza



LRT Plaza



Denver Union Station Redevelopment

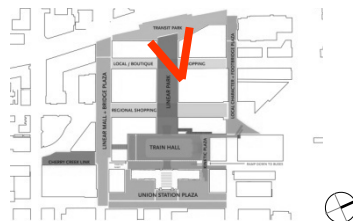


PRELIMINARY

AECOM SOM HARGREAVES ASSOCIATES

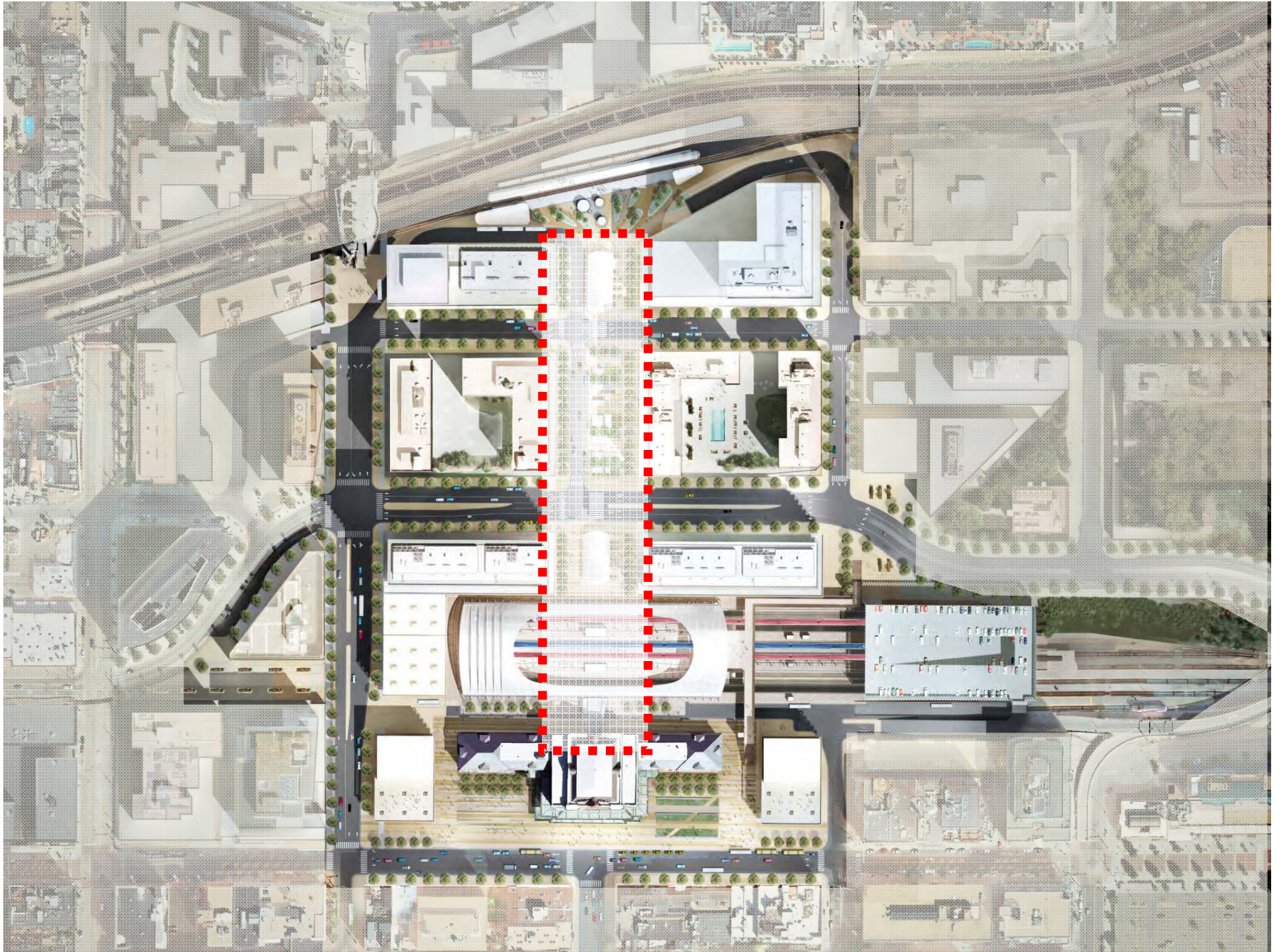


Denver **Union Station** Redevelopment



PRELIMINARY

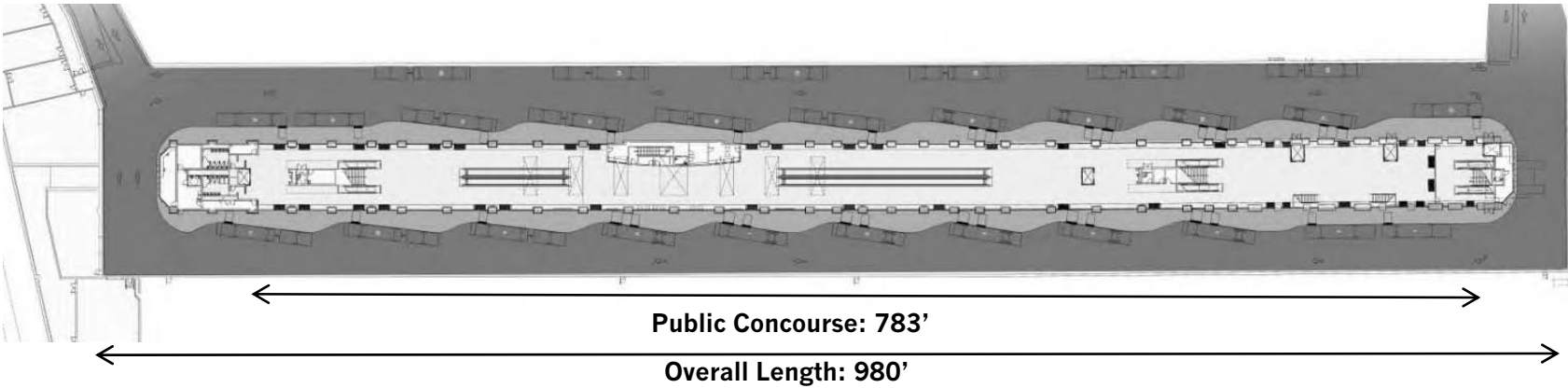
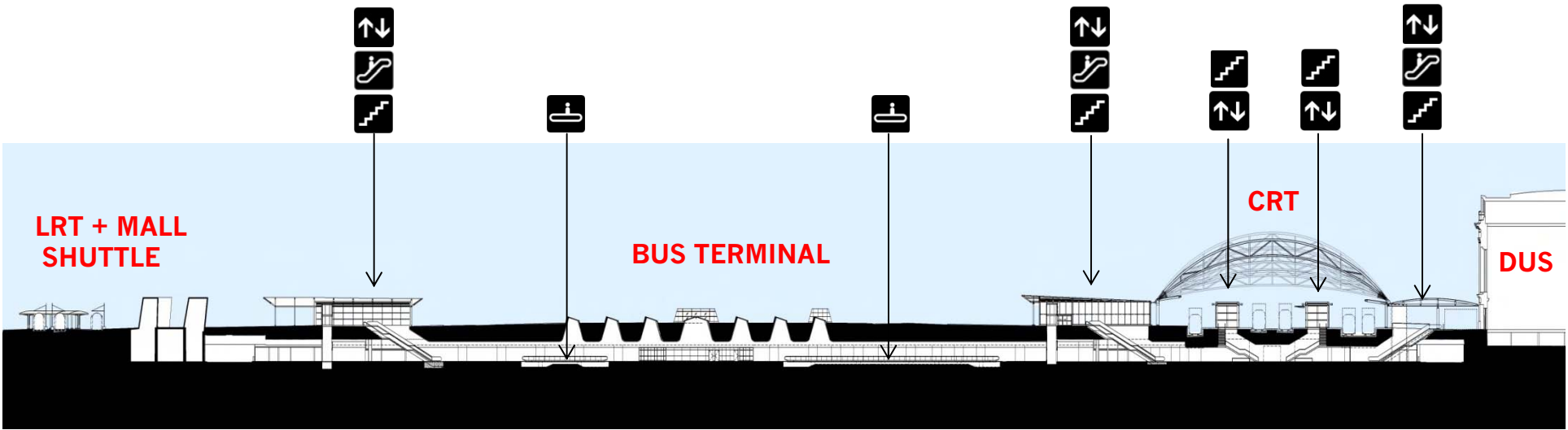
AECOM **SOM** HARGREAVES ASSOCIATES



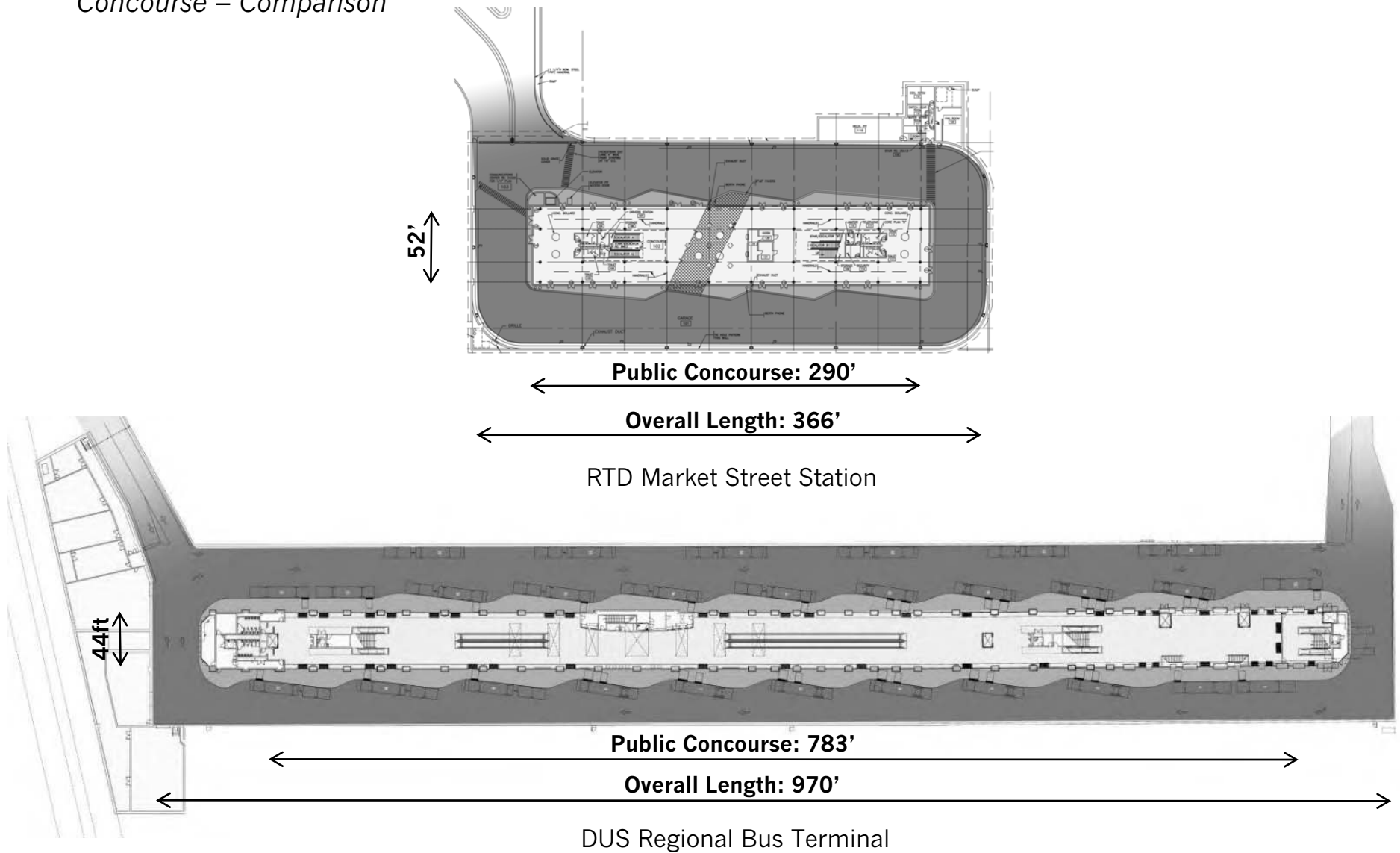
Regional Bus Terminal Vertical and Horizontal Circulation

- Stairs
- Escalator
- Elevator
- Moving Walkway

< 5% trips between LRT and CRT
 <10% total trips bound to Bus Terminal





Regional Bus Terminal Concourse – Comparison



Regional Bus Terminal

Moving Walkways

 Travelator No. 1
Length: 73'-9"

 Travelator No. 2
Length: 142'-6"

Total Travelator Length: 216'-3"

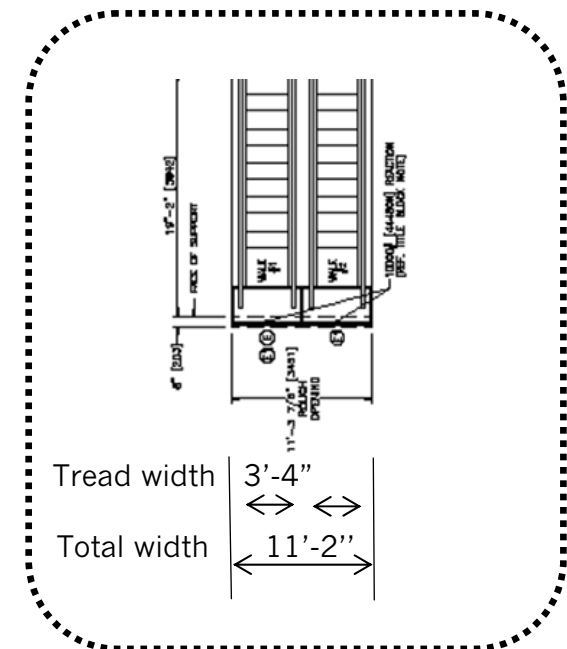
- 27% of concourse length
- 25% of concourse width
- 2,380 SF of floor area

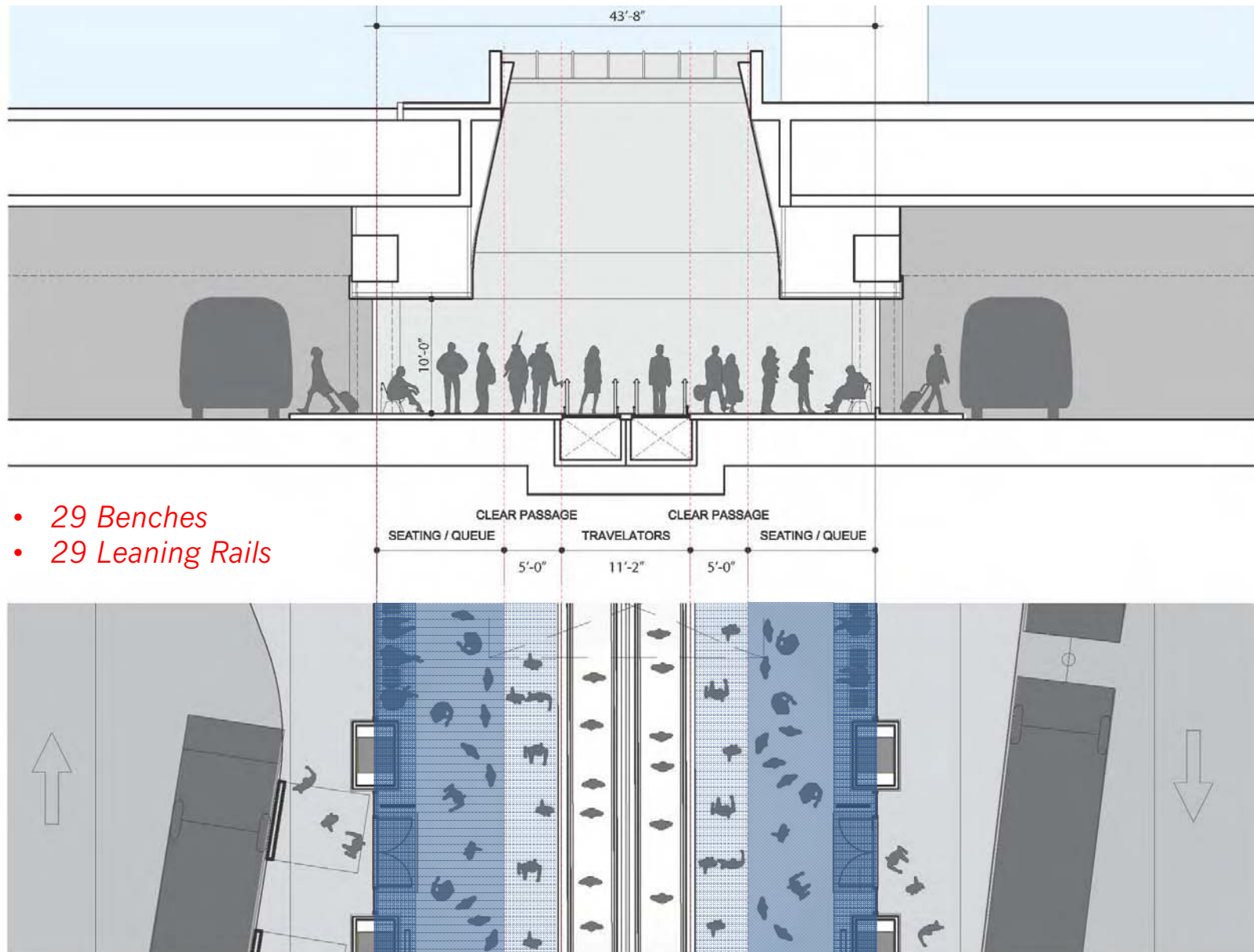
Public Concourse: 783'



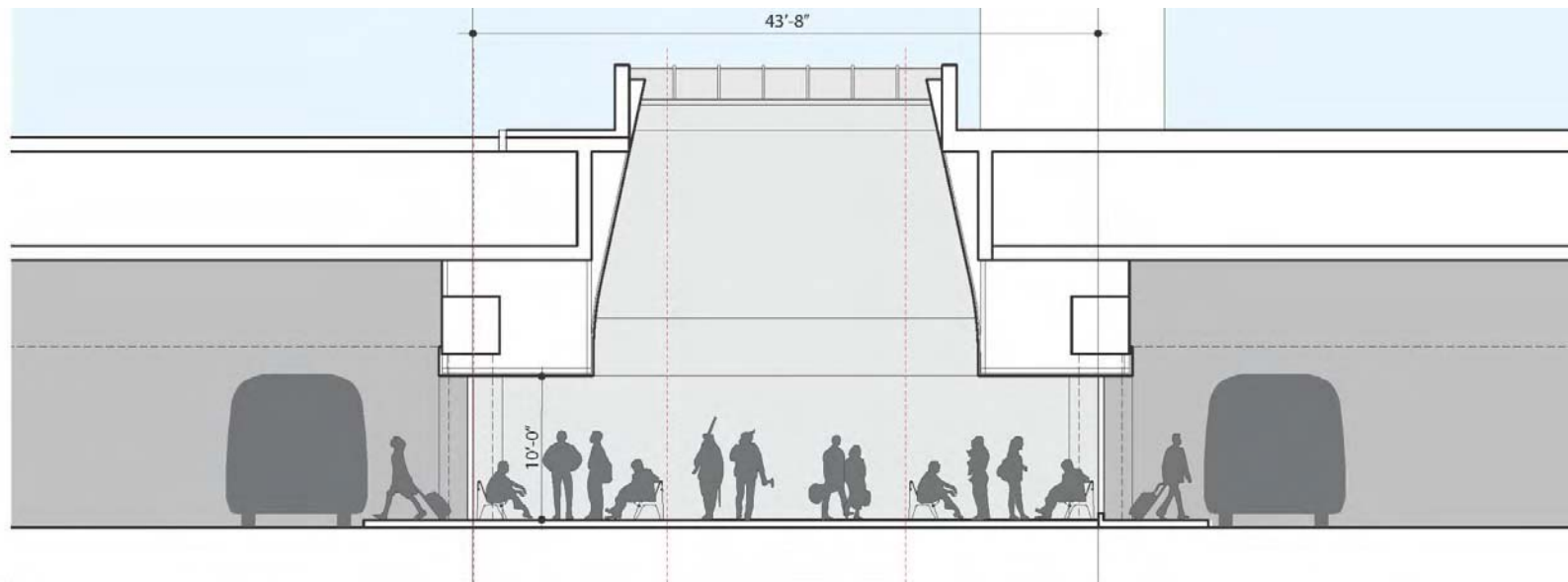
KONE ECO3000® Autowalk

RELIABILITY IN TRANSIT

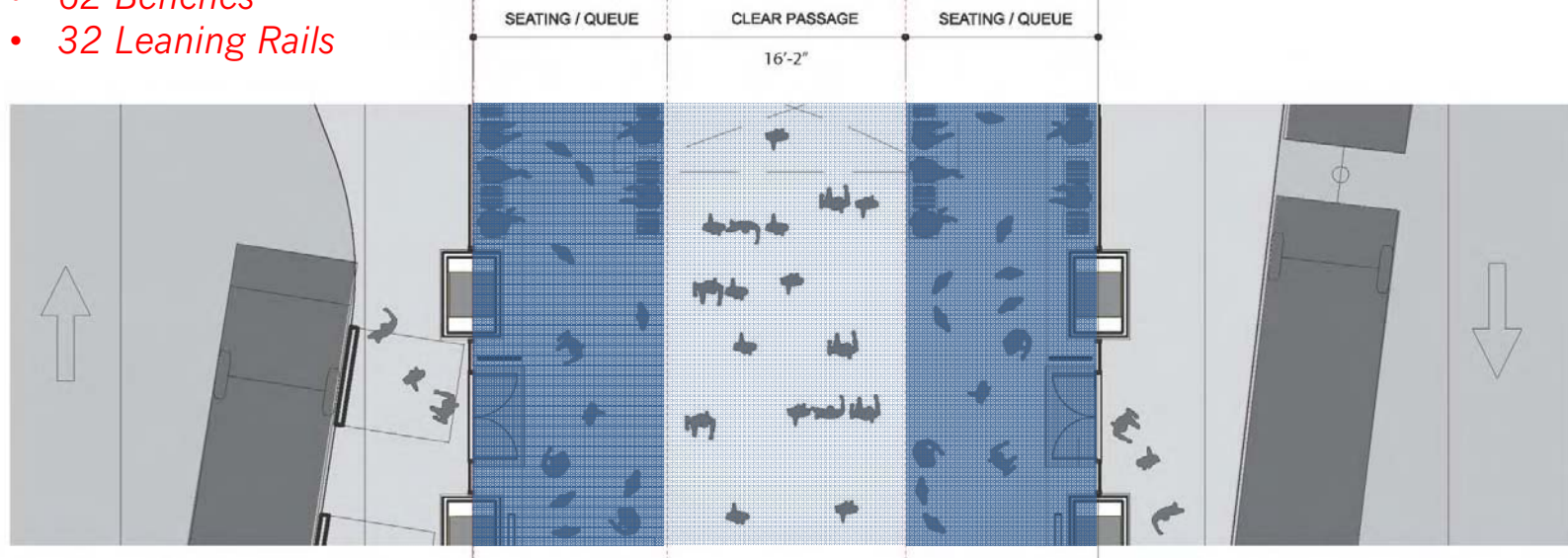




- 29 Benches
- 29 Leaning Rails



- 62 Benches
- 32 Leaning Rails



Regional Bus Terminal

RTD Market St. / Civic Center Stations – Concourse and Bus Gates



Pedestrian Circulation



Typical Bus Gate

Regional Bus Terminal

RTD Market St. / Civic Center Stations – Concourse and Bus Gates



Gate Queue + Perch Seats



Customer Info + Amenities

Regional Bus Terminal

DUS Concourse and Bus Gates





